

Petroni: Molding a better Future with CADfix

“CADfix can also generate the models in STL format or translate native CATIA files directly into STL for the simulations. What this means to us at Petroni is significant time savings, a reduction in time to market, an increase in quality and ultimately, greater client satisfaction.”

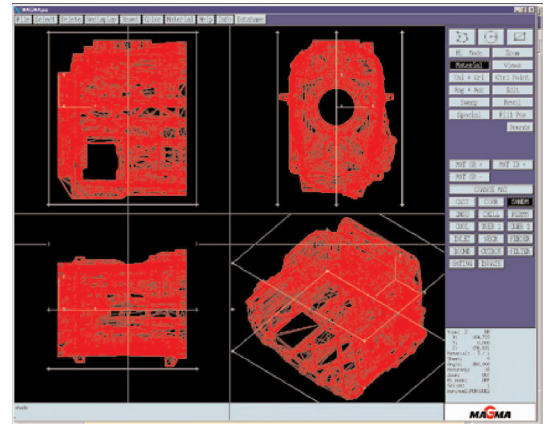
- Angela Chirico
Analysis Engineer, Petroni

For decades the mold and die industry has been the supporting base for manufacturing. While Germany has long been the European leader in terms of production share, Italy has leapt ahead over the last decade. As a major player in this increase in production, Petroni S.p.A. has worked with the most advanced production and computer simulation technologies. These technologies allow faster machining times and considerable improvements in quality.

Petroni was founded in 1965 and is based in Bologna, Italy. The company produces die casting molds for light aluminum and ultra-light magnesium alloys and has expanded and developed over the years to become one of the biggest die manufacturers in Europe. Approximately 90 percent of its production is aimed at foreign markets.

To create these molds Petroni regularly uses information taken from CAD files. Unfortunately, taking the information from the native files can be a slow and arduous process and can cause problems throughout the analysis cycle. The difficulties that the engineers and analysts at Petroni had been experiencing were linked to the exchange of CAD model data from native files to formats suitable for analysis. CAD file transfer is often a problem for the engineering industry, but when the target system is an analysis application, this problem is exacerbated by a set of downstream requirements that the translated information has to meet.

While undergoing training at EnginSoft, the largest private Italian CAD reseller and consultancy, Petroni engineers saw CADfix translating files and avoiding many of the issues that they had been experiencing. Angela Chirico, Analysis Engineer at



Gearbox in MAGMA's preprocessor

Petroni, says, “The CADfix interoperability tools were quite clearly able to resolve a number of the problems we had previously suffered. It was the answer to our file translation predicament.”

In an effort to reduce the time required to resolve CAD data interoperability issues, Petroni implemented CADfix. CADfix is able to address a variety of problems inherent in information and file transfer between different CAD systems. Chirico explains, “Before using CADfix the translation process of the CAD model to the simulator was a lengthy one. The CAD files would arrive in their original format from the client and have to be imported into CATIA for any necessary reworking. Following this step, the file would then have to be converted into an STL file before being passed into Magmasoft for the casting process simulations.”

CADfix

CADfix removes barriers preventing the reuse of solid models. By providing an extensive set of geometry manipulation tools for importing, repairing and exporting data, CADfix maximizes the reuse of CAD data in downstream applications.

Petroni: Molding a better Future with CADfix

The automatic repair process builds the solid model, reducing the time needed from days of work to less than one hour.

About ITI

ITI is the global leader providing reliable interoperability, validation, and migration solutions for product data and related systems. Our customers recognize the value in having a trusted solution partner that provides more than just software. ITI solves complex product data interoperability problems so that the world's leading manufacturers can focus on making great products. You need to keep your engineering initiatives moving forward.

View all of our case studies at iti-global.com/customer-success

This allowed Petroni to import the repaired IGES file into CATIA in a considerably improved condition after less than two hours of reworking. A binary STL file could then be generated and used directly in Magmasoft for the analysis work. Chirico says, "Although we still have to use CATIA to generate the geometry for the molds, CADfix has almost completely resolved the transfer problems we had been suffering. In the case of the IGES file transfer, even though the model was over 85 MB, the time taken to repair and transfer the file was reduced from the predicted three days to less than two hours while simultaneously improving the quality of the geometry.

"At the same time CADfix can also generate the models in STL format or translate native CATIA files directly into STL for the simulations. What this means to us at Petroni is significant time savings, a reduction in time to market, an increase in quality and ultimately, greater client satisfaction."

Problems were occurring in the initial transfer into CATIA from the various CAD systems used by the clients. Chirico goes on to explain, "It was taking hours and even days of work to repair the CAD models before we could begin to use them. Some models had to be completely closed to a volume in CATIA before we could think about translating it into the STL file format needed for the Magamasoft simulations."

CADfix allows Petroni engineers to run automatic repair programs on source CAD files, often received as IGES files. The automatic repair process builds the solid model, reducing the time needed from days of work to less than one hour. CADfix's value became apparent to everyone involved in a recent engine block project. Says Chirico, "With the original IGES file, we examined the model after the repair process and found a number of problem surfaces remaining. Addressing these problems would have taken several days. However, in CADfix it only took an additional 30 minutes to interactively defeature the model and remove the unnecessary modeling artifacts."

Create Momentum 

www.iti-global.com
info@iti-global.com
1-800-783-9199 US
+44-1954-234-300 UK

European Headquarters:
4 Carisbrooke Court, Anderson Road
Buckingway Business Park, Swavesey
Cambridge, CB24 4UQ, England

World Headquarters:
5303 DuPont Circle
Milford, OH 45150 USA



International TechneGroup